

Isometrie

Die isometrische Darstellung entspricht der isometrischen Darstellung der Realität, die in der Realität der Fall ist.

Isometrie

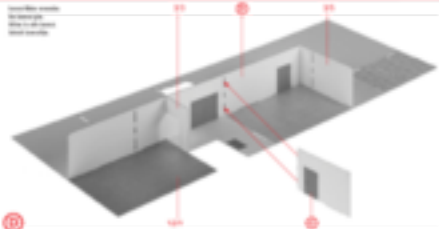
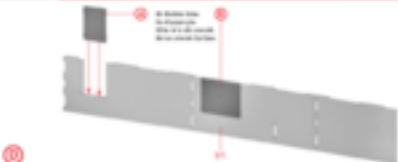
Die isometrische Darstellung entspricht der isometrischen Darstellung der Realität, die in der Realität der Fall ist.

Isometrie

Die isometrische Darstellung entspricht der isometrischen Darstellung der Realität, die in der Realität der Fall ist.

Isometrie

Die isometrische Darstellung entspricht der isometrischen Darstellung der Realität, die in der Realität der Fall ist.



Inschließen: jeweils
in beiden der
Innen- & äußeren
Wandbohle

E

271

272

F

273

274

G

275

Inschließen: jeweils
in beiden der
Innen- & äußeren
Wandbohle

H

276

277

278

I

279

280

J

281

Bei Schließung
inschließen der
Innen- & der äußeren
Wandbohle in beide

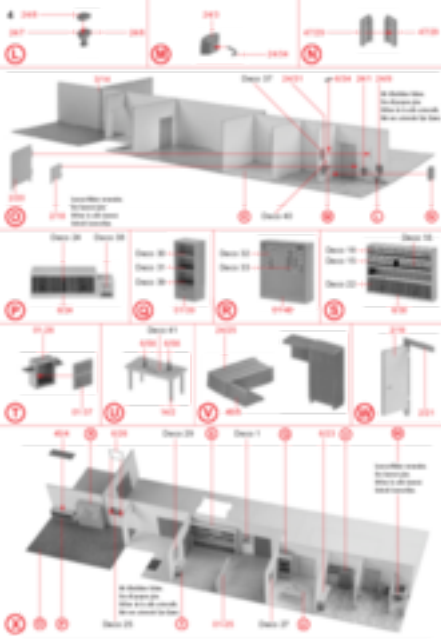
Inschließen: jeweils
in beiden der
Innen- & äußeren
Wandbohle

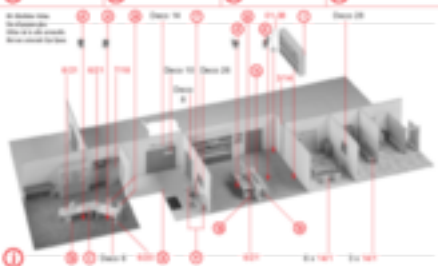
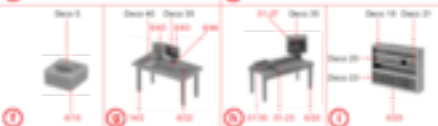
K

282

283

284







1

2

Insert the
door into the
frame and
secure it.



40

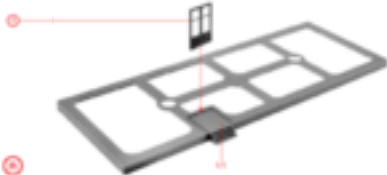
3

4

Insert the
door into the
frame and
secure it.

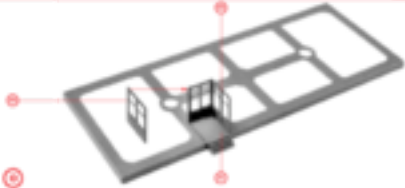


40



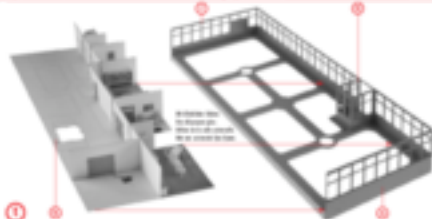
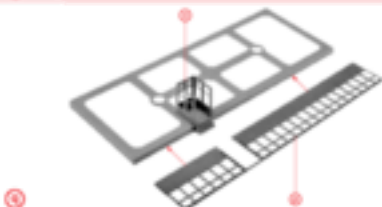
5

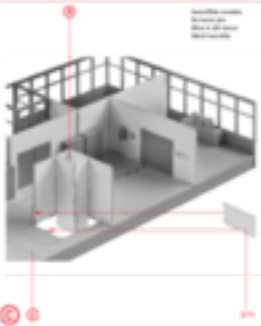
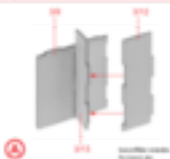
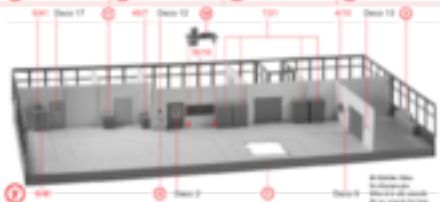
6



7

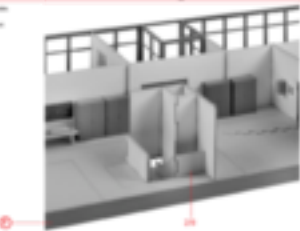
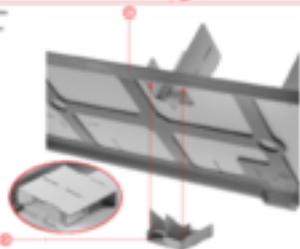
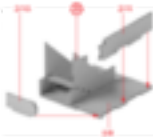
8







Insert the corner bracket into the wall plate and secure it with the screws.





④



©



⑨



©



1. *Identify the main idea of the passage.*
 2. *Identify the supporting details.*
 3. *Identify the author's purpose.*
 4. *Identify the author's tone.*

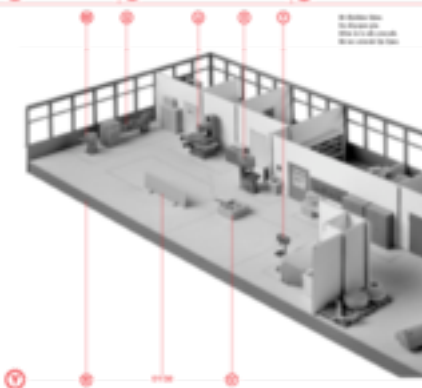
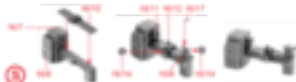


2004



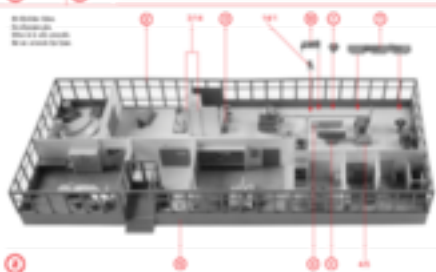
1

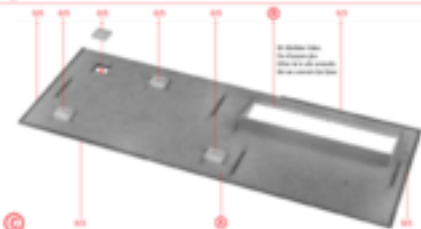
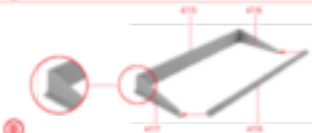
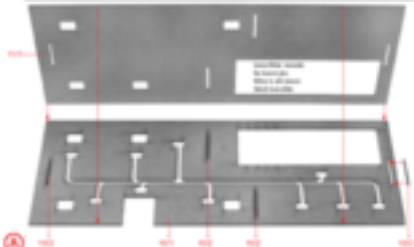
11



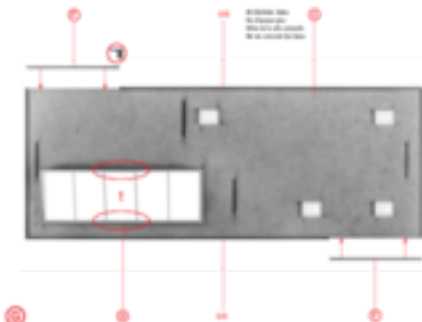
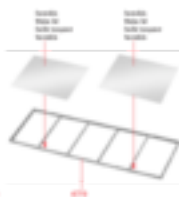
Ein Beispiel für
die Verwendung
des 100 % -
Ansatzes ist die
Berechnung des
Netto-Verbrauchs

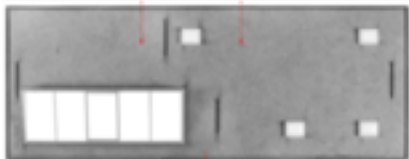






18



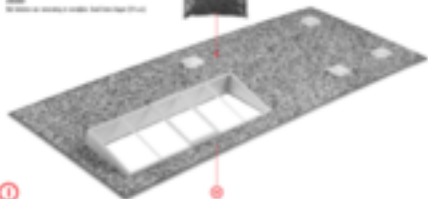


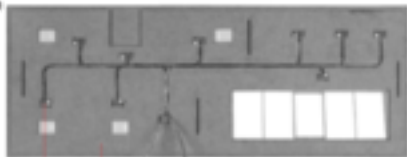
NOTE: The drainage channel is installed in the roof (DR 10).

NOTE: The drainage channel is installed in the roof (DR 10).

NOTE: The drainage channel is installed in the roof (DR 10).

NOTE: The drainage channel is installed in the roof (DR 10).





②

1. Place the model
on the table and
remove the top
layer of the
model.

③



After construction, the model is shown in the top-down view.
The model is shown in the top-down view. The model is shown
in the top-down view. The model is shown in the top-down view.
The model is shown in the top-down view. The model is shown in the top-down view.

1. Place the model
on the table and
remove the top
layer of the
model.

④



⑤



⑥

1. Place the model
on the table and
remove the top
layer of the
model.



Insertar el soporte
de la mano que
tiene el cable en
el cable de la mano.

(L)

Insertar el soporte
de la mano que
tiene el cable en
el cable de la mano.

(M)

(N)

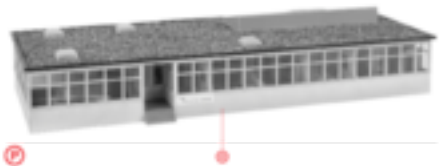
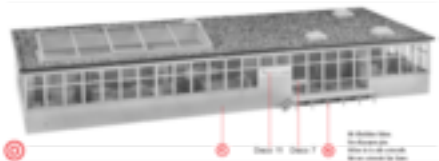
(O)

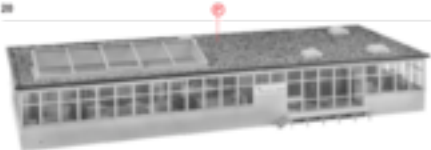
Insertar el soporte
de la mano que
tiene el cable en
el cable de la mano.

(M)

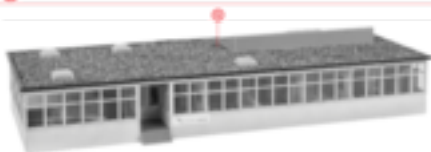
(N)

(O)





④



⑤